



TURBOSOL[®]

PUMPING TECHNOLOGY FOR THE CONCRETE INDUSTRY

TURBOSOL
over 60 years
of experience
and reliability

TB 30C

S-VALVE PUMP



TB 30C: cutting edge technology, compact design and best performance for the toughest jobsites.

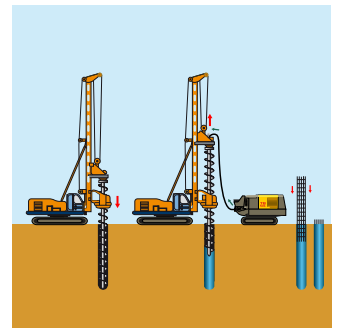
www.turbosol.com

TB 30C

TECHNICAL DATA

Liquid cooled diesel engine	Perkins - 404D22 - 4 cylinder - 36,3 kW - 50 HP (stage III A)	
Infinitely adjustable output (max)*	piston side 30 m ³ /h	rod side 40 m ³ /h
Max. aggregate size	35 mm	
Max. working pressure	piston side 80 bar	rod side 55 bar
Pumping cylinders	Ø 200 mm stroke of 570 mm	
Max. strokes	28	37
Drive cylinder diameter	100/56 mm	
Delivery manifold	Ø 150 mm	
Hopper capacity	300 l	
Delivery distance*	200 m	160 m
Delivery height*	100 m	60 m
Filling height	146 cm	
Chassis	crawler with pads	
Size (L x W x H)	263X150X192 cm	
Weight	2.650 kg	

* The data indicated are theoretical and depend on the quality and consistency of the materials to be used, wear and tear of the pump and the diameter of the hoses. The performance in distance and height cannot be reached simultaneously.



Characteristics

TB 30C is the new crawler concrete pump with S-valve and variable output designed for filling bored piles and special concrete jobs.

State of the art hydraulic system, solid structure, new ergonomic components setup, reliable controls ensure high level performance with all sort of concrete and low operating costs.

Applications

- Bored piles casting
- Pumping up to 35 mm of concrete
- Grouts
- Self-levelling floor screeds
- Land reinforcement
- Micro-piles, pressurized injection of mortars and slurries
- Compaction grouting
- Shotcrete works

Technical comfort

- The practical doors on the canopy and the new construction concept make maintenance and control operations quick and easy.
- Tubular chassis including water, oil and diesel tanks.
- Central single lifting eye.
- Discharge door hydraulically operated for fast cleaning operations.
- Components generously dimensioned.
- Fully hydraulic controls.
- New internal layout concept.
- Compact design.
- New hopper-valve-agitator design ideal even for harsh concrete.
- Remote control for pump and crawler.
- Optical and acoustic warning device.

Scope of delivery

- 4-cylinder liquid cooled diesel engine
- Hopper assembly with S-valve and agitator
- Concrete grill with vibrator
- Centralized lubrication system
- Outlet collector Ø 150 mm with Victaulic couplings
- Hydraulic discharge door
- Safety horn
- Steel crawler chassis
- Hydraulic circuit with optimized exchange sequence
- Electromechanical control board
- Bosch Rexroth variable displacement pump
- Lifting eye
- Steel bend at 90° Ø 150 and reduction cone from Ø 150 to Ø 125
- Radio remote control
- 2 washing sponges
- Manual grease pump
- Accessory box

Optionals

- Water pump 40 l/m' - 20 bar
- Various dimensions hoses Ø 125, Ø 100, Ø 75, Ø 65, Ø 50 and related accessories
- Hydraulically controlled air compressor, twin-cylinder, capacity 800 l/min
- Rubber pads for crawler

TURBOSOL

PUMPING TECHNOLOGY FOR THE CONCRETE INDUSTRY

TURBOSOL PRODUZIONE S.r.l.

Via Alessandro Volta, 1 - 31030 Pero di Breda di Piave (Treviso) - Italia

Tel. +39 0422 90251 - Fax +39 0422 904408 - E-mail: info@turbosol.it - www.turbosol.com

Standard equipment and optionals could vary due to specific market and legal requirements. The data in this brochure are purely indicative. Turbosol Produzione S.r.l. could make alterations to the models described in this brochure at any time for technical and commercial reasons.

